



Special Edition

Parents Newsletter

Resources for parents and child caregivers

FRIDAY DECEMBER 18TH

(LAST DAY!)



Click [here](#) for more information.



6:00 PM – 10:00 PM EST

Signing Santa will take calls live from his workshop at the North Pole!

All times are in Eastern Standard Time

CALL SIGNING SANTA!

877-507-2682

For more information go to
ZVRS.COM/SIGNINGSANTA

All Signing Santa calls are point to point and not VRS calls.

EVENTS & WEBINARS

DEAF-BLIND CHILDREN & YOUTH: WEBINARS



**National Center
on Deaf-Blindness**

6 webinars are available with topics like:

- Establishing routines at home
- Early literacy and numeracy
- Overview of the IEP development process

Click [here](#) to watch.

The full link is: <https://www.nationaldb.org/updates/ncdb-professional-development-series-deaf-blind-strategies/>

SHARED READING SATURDAY

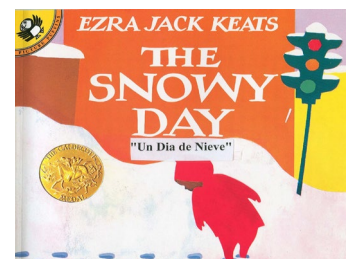
DECEMBER 19TH AT 10:00 AM

REGISTER [here!](#)

Facebook Live: www.facebook.com/SharedReadingSaturday

YouTube Live:

www.youtube.com/channel/UCih3jEwAdEllywpDLbJTU-A



MANAGING MENTAL HEALTH DURING THE HOLIDAYS



In case you missed it... TLC Director of *Walden Community Services* Elisa Valles, and Chief *Equity and Inclusion Officer* Kyle Amber Clark, participated in a CONVO Hangout recently with Carlos Aponte-Salcedo, Jr., and Melissa Elmira Yingst and shared some self-care tips.

In case you missed it...

TLC Director of *Walden Community Services* Elisa Valles, and Chief *Equity and Inclusion Officer* Kyle Amber Clark, participated in a CONVO Hangout recently with Carlos Aponte-Salcedo, Jr., and Melissa Elmira Yingst and shared some self-care tips.

Watch the video [here](#).

PUBLIC SCHOOL PARTNERSHIPS

This program provides support for academic and developmental needs of students with hearing aids and cochlear implants in educational settings.

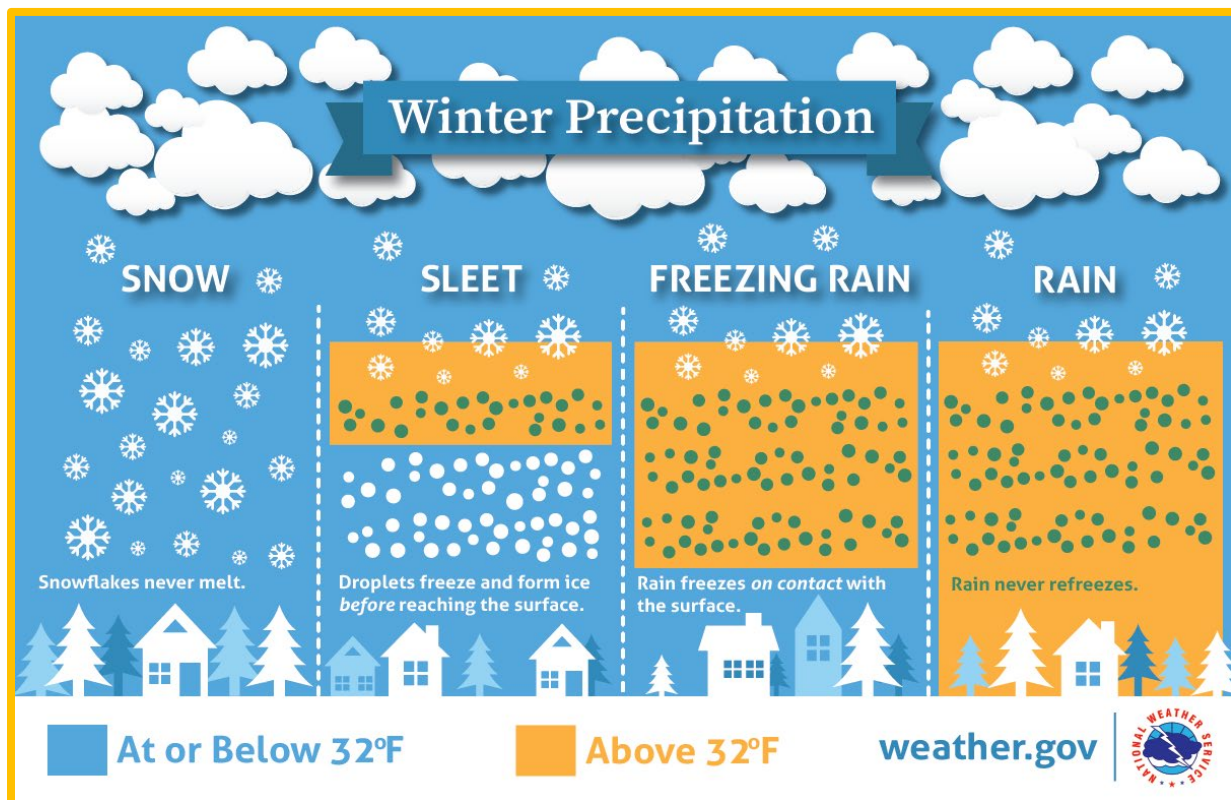
Click [here](#).



ASL AT HOME

Download materials and classes for families with young deaf children and professionals. Available in English and Spanish and **FREE** for families of deaf children.

Website: <https://www.aslathome.org/>



WINTER SAFETY

FROSTBITE

A victim is often unaware of frostbite because frozen tissue is numb.

**Signs & Symptoms**

- Redness or pain in any skin area may be the first sign of frostbite.

Other signs include:

- a white or grayish-yellow skin area
- skin that feels unusually firm or waxy
- numbness

HYPOTHERMIA

Hypothermia often occurs at very cold temperatures, but can occur at cool temperatures (above 40°F), if a person is wet (from rain, sweat or cold water) and becomes chilled.

**Signs & Symptoms****Adults:**

- shivering
- exhaustion
- confusion
- fumbling hands
- memory loss
- slurred speech
- drowsiness

Infants:

- bright red, cold skin
- very low energy



If a person's temperature is below 95° get medical attention immediately.

Stay Safe on the Slopes

Sledding, snowboarding and skiing are fun ways for kids to stay active in the winter. Some tips from the American Academy of Pediatrics:



Sled feet first or sitting up.



Wear a helmet to ski or snowboard. It's a good idea for sledding, too.



Choose hills away from traffic, trees & fences.



Don't skate alone!



Kids sun goggles/glasses

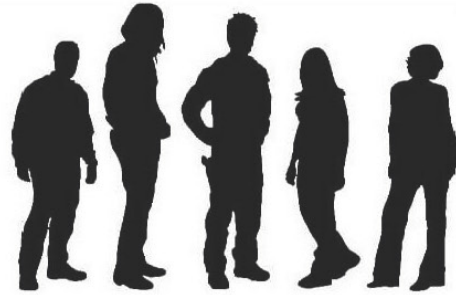


More tips at:
HealthyChildren.org



Boston Children's Hospital
Otolaryngology and
Communication Enhancement
Family Education and Advocacy Team

Transitions • Workshops • Connections ... beyond the clinic
Funded by the Decibels Foundation and The Caroline Bass Fund



Transitioning to High School: Support and Tips for Deaf and Hard of Hearing Students and Their Families

Wednesday, January 6, 2021
7:00 - 8:00 p.m.

Topics include:

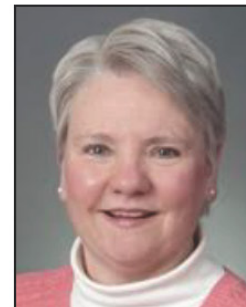
- Academic, social and extracurricular differences between middle school and high school
- Helpful strategies to adjust to high school
- Preparations for family/student prior to the transition to high school

About the presenters:

Charlotte Houck Mullen, AuD, CCC-A is a Specialty Audiologist for Clinical Education under the Department of Otolaryngology and Communication Enhancement at Boston Children's Hospital.



Susan Mumby Gibbons, AuD, CCC-A/SLP is a clinical audiologist. She specializes in working with children who are deaf or hard of hearing and programming cochlear implants. Dr. Gibbons is a member of the Cochlear Implant Team at Boston Children's Hospital.

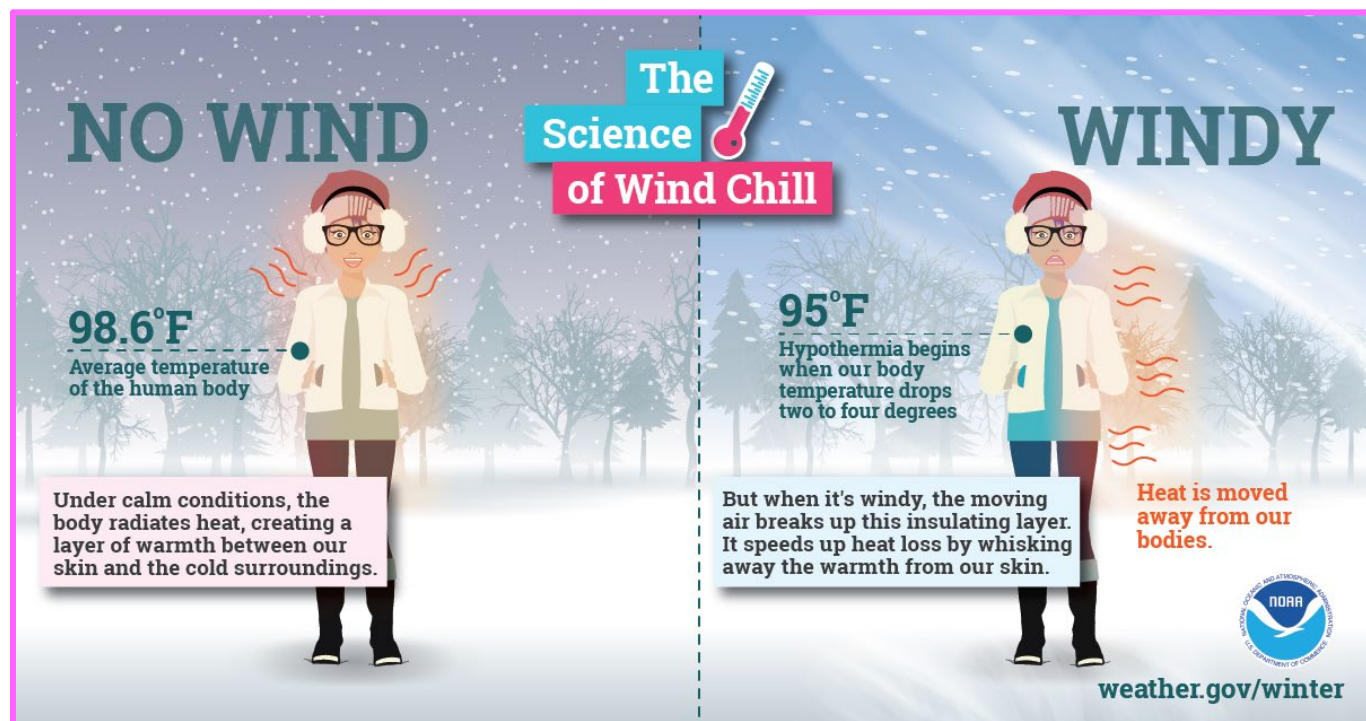


E-mail Susan at susan.gibbons@childrens.harvard.edu or Charlotte Mullen at charlotte.mullen@childrens.harvard.edu for the Zoom link. Feel free to join with video or by phone. Captioning has been arranged for the workshop. If you need additional accommodations, let us know by December 30.

The workshop is generously funded by the Caroline Bass Fund and the Decibels Foundation.

REGISTER to get the Zoom link!

Email Susan at susan.gibbons@childrens.harvard.edu or Charlotte Mullen at charlotte.mullen@childrens.harvard.edu.



DHILS SPECIAL EDITION NEWSLETTERS – PAST ISSUES

Missed a *What's Up* or *Parents Special Edition* Newsletter?

Find all issues [here](#) on CLW's website.

Like/Follow CLW on:



**WANT OUR NEWSLETTERS
EMAILED TO YOU?**

Contact Kim White at:
kwhite@centerlw.org

QUESTIONS ABOUT THIS NEWSLETTER?

CONTACT YOUR SKILLS TRAINER WITH ANY QUESTIONS!

Need a website address from your printed newsletter? Contact your staff!

Joan Philip	<i>DHILS Director</i>	508-762-1165 (VP)
VACANT	<i>Deaf Skills Trainer</i>	508-762-1350 (VP)
Denise Paro	<i>Administrative Assistant</i>	508-556-1600 (VP)
Ellen Perkins	<i>Hard of Hearing Skills Trainer</i>	508-502-7576 (Voice); 508-762-1354 (VP)
Joy Spurlin	<i>Assistant Manager/Skills Trainer</i>	508-762-1166 (VP)
Justina Bailey	<i>Deaf Skills Trainer</i>	508-762-1021 (VP)
Kim White	<i>Staff Interpreter</i>	508-755-1042 x5042; 508-283-1036 (VP)