



Special Edition - *What's Up Newsletter*

www.CenterLW.org

COVID-19 UPDATES

NEW ORDERS FROM GOVERNOR BAKER

STAY-AT-HOME ADVISORY

COVID-19 cases and hospitalizations are going up!

Why? Social gatherings and not everyone is following the rules.

How do we stop the numbers from going up? Limit activities that could lead to COVID-19 spread.

Starting **Friday, November 6, 2020**, all Massachusetts residents should stay home *every night between 10 PM - 5 AM*:

- Only leave to go to work/school, or for **essential** needs (emergency medical care, grocery store/pharmacy, picking up take-out food, or receiving deliveries.
 - Stay 6 feet away from others.
 - Wear a face mask.
 - Don't touch things often touched by others.
- Don't have people come to your house to visit.
- Use phone or video chat to talk with friends/family.



Watch the Governor's news conference [here](#).
(November 2, 2020)



www.mass.gov/news/mask-up-ma

Read the order [here](#).

FACE MASKS REQUIRED IN PUBLIC PLACES

EVEN IF 6 FEET AWAY FROM OTHERS.

WHO: Everyone *over* age 5 **must** wear a mask/face covering.

WHERE: Public places = **ALL** places *open to the public*.

EXCEPTIONS:

- Children **under** age 5.
- Anyone with a medical reason or disability that prevents them from safely using a mask.

[NOTE: employers and schools are allowed to request proof].

REVISED GATHERING ORDER

HOW MANY PEOPLE CAN BE TOGETHER?

Private:

- Indoor - 10 or less
- Outdoor - 25 or less



Public:

- Indoor - 25 or less
- Outdoor:
 - Low-risk community - 100 or less
 - Others - 50 or less



Download/read the revised order [here](#).

BUSINESS CLOSING TIME ORDER



Certain businesses must close **by 9:30 PM**, so people can get home by 10:00 PM.

- Business staff are allowed to stay.
- Deliveries can continue.

See full list of businesses and read the order [here](#).

NEW DEFINITION OF "CLOSE CONTACT"

OLD

- You are within 6 feet of an infected person for at least **15 consecutive minutes**.
- EX: one 15-minute exposure; from 6:00 PM to 6:15 PM.

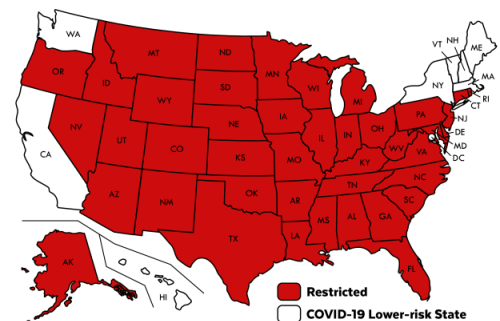
NEW



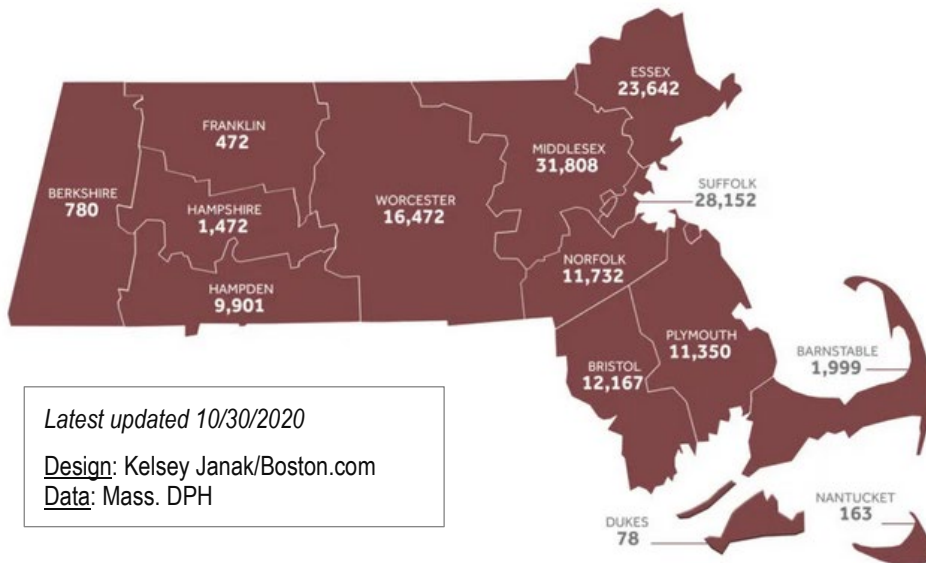
- You are within 6 feet of an infected person for a total of 15 minutes or more **BUT** in a **24-hour period**.
- EX: three 5-minute exposures for a total of 15 minutes; 9:00 AM - 9:05 AM (5 minutes), 6:15 PM - 6:20 PM (5 minutes), 11:25 PM - 11:30 PM (5 minutes)

Click [here](#) for more information.

Updated "Lower Risk States" Map
Click [here](#) to view the map larger.



WHERE ARE CORONAVIRUS CASES IN MASS?



151,741 confirmed and probable cases

9,727 related deaths

Map to the left shows where cases are, by county.

Note: locations of 310 cases are currently unknown.

For more information see: www.boston.com/tag/coronavirus

See what's happening in other states - [here](#).

STOP THE SPREAD - EXTENDED TO THE END OF DECEMBER



FREE COVID-19 testing.

Continued testing in: Brockton, Chelsea, Everett, Fall River, Framingham, Holyoke, Lawrence, Lynn, Marlborough, Methuen, New Bedford, Randolph, Revere, Salem, Saugus, Springfield, Winthrop, or Worcester

Sick or not sick - everyone is encouraged to get tested.

Click [here](#) for where to go for testing and more information.

Missed the MSAD Virtual Town Hall with EOHHS Secretary Sudders?

Check out MSAD's website and FaceBook page for the latest information!



<https://massdeaf.org/>



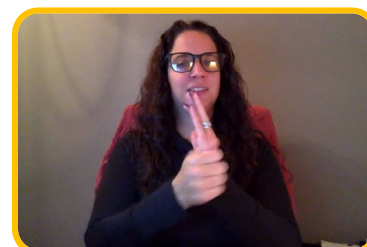
Click [here](#).

ROMANCE AND DANGEROUS SCAMS VLOG

Watch the ASL VLOG [here](#).

Want to read or see the article?

See attached *Romance Scams* paper.



COVID-19 DAILY DASHBOARD (REVISED)

New information included in the Daily Dashboard includes:

- *Total Cases by Age Group*
- *14-Day Average Turnaround* (time for COVID-19 test results to be reported to DPH)
- The effect of college and university testing

Click [here](#) to see the full report (updated every day by 5:00 PM)



Massachusetts Department of Public Health COVID-19 Dashboard- Tuesday, November 03, 2020

Dashboard of Public Health Indicators

Testing and Cases

Newly Reported Confirmed Cases	Total New Molecular Tests Reported	7-Day Average Positivity	Estimated Active Cases
923	54,843	1.78%	16,681

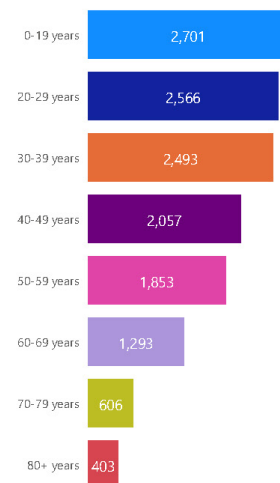
Hospitalization

Total Confirmed COVID Patients in Hospital	Total Confirmed COVID Patients in ICU	Average Age of Cases that were Hospitalized*
485	96	67

Deaths

Newly Reported Deaths among Confirmed	Average Age of Deaths*	14-Day Average Turnaround (from Test Sample to Report to DPH)*
12	81	2.1

Total Cases By Age Group from 10/17/20-10/30/20**



Note: For definitions, please see the Glossary at the end of this document in "Definitions and Disclaimers". Average age of hospitalized cases and deaths are calculated for a two week period covering 10/11/20 to 10/24/20. Please see the most current weekly dashboard for more details <https://www.mass.gov/info-details/covid-19-response-reporting>
 *Last updated Wednesday, October 28th; **Last updated Monday, November 2nd

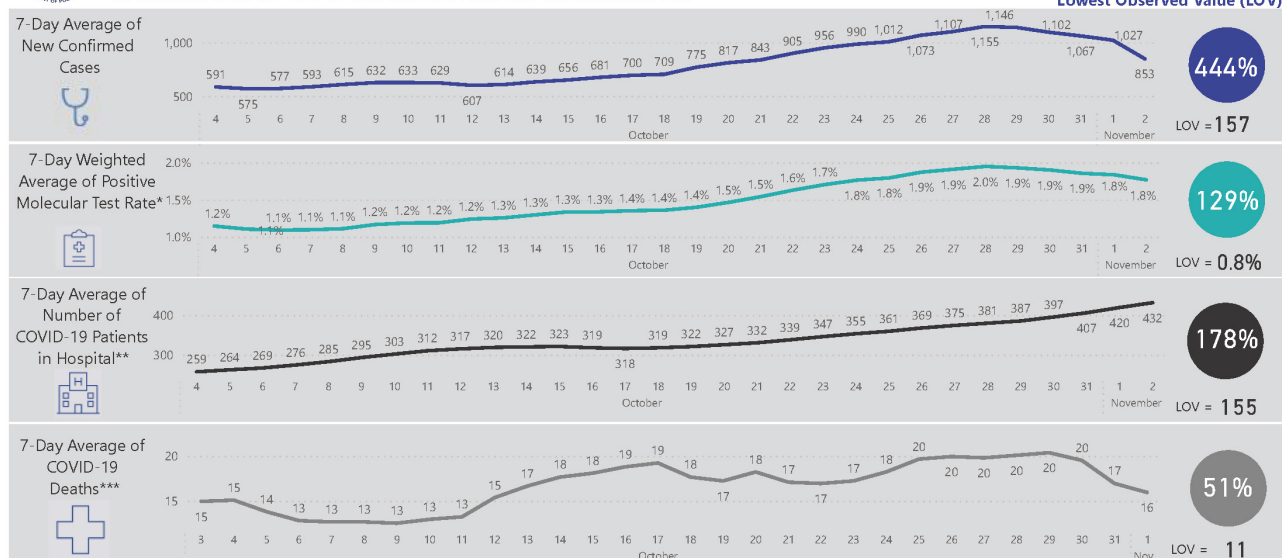
1



Massachusetts Department of Public Health COVID-19 Dashboard- Tuesday, November 03, 2020

Dashboard of Public Health Indicators

Percent of Change Since Lowest Observed Value (LOV)



*Calculated from total molecular tests for all of MA; **Includes only confirmed cases of COVID-19; ***Includes deaths in only confirmed cases of COVID-19

Note: LOV = Lowest observed value, i.e. the lowest value the public health indicator has been since tracking started on April 15, 2020. Due to data lags, counts for most recent dates are likely incomplete, and thus measures are subject to change.

2

VOTING RESOURCES 2020

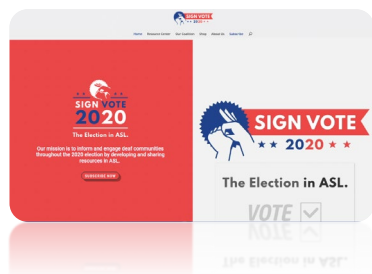
YOU VOTED! NOW WHAT?

This year's election is different because of mail in ballots and early voting.

States may be counting the votes for a few days!



LEARN MORE ABOUT THE 2020 ELECTIONS



SignVote: Election 2020
<https://signvote.org/>



DPAN.TV click [here](#).



Election 2020 in pictures
Click [here](#).

MA COVID HOUSING HELP

Are you worried you may become homeless because of missed rent or mortgage payments? There are programs available that can help low-income households in covering both past and future rent and mortgage costs.

Click [here](#) to see the video.



WEBINARS & UPCOMING EVENTS



PLEASE WEAR MASK WITH YOU FOLLOW POLICY
PLEASE AND THANK YOU FOR UNDERSTAND

WHEN: Saturday, November 7, 2020
TIME: 12:30 - 3:00 PM
WHERE: RED ROBIN
 70 Worcester Providence Turnpike
 Millbury, MA 01527
 (The Shoppes at Blackstone Valley)

RESTAURANT COST: \$\$

New Policy: Attendees are expected to purchase food and/or beverage.

ASL HANGOUT

SATURDAY, NOVEMBER 7, 2020
12:30 PM - 3:00 PM

Red Robin (Shoppes at Blackstone Valley)
 70 Worcester Providence Turnpike
 Millbury, MA

NOTE: Attendees must buy food/beverage.

Questions?

Robert Kwiatkowski: fetarobert@gmail.com

Kenny Trychon: bettaorange@charter.net

DHILS CONSUMER DEAF CHAT - JOIN US!

TUESDAY, NOVEMBER 10, 2020
1:00 PM - 2:00 PM

*Theme: Favorite Holiday Memories
 (Halloween, Thanksgiving, etc.)*

RSVP to Denise Paro at:
dparo@centerlw.org or 508-556-1600 (VP)

Click [here](#) to watch a video about setting up
 and using Zoom.



DPC'S ANNUAL CELEBRATION OF DISABILITY RIGHTS!



NOVEMBER 16TH, 2020
6:00 PM - 8:00 PM

Celebrate the disability community, and honor
 those who have gone above and beyond in
 service to disability rights.

ASL interpreters & CART will be available.

Register [here](#).

RESOURCES

Food



Not enough food/money to buy food?
Type in your zip code [here](#) for a list of food banks/pantries near you.



Elder Services of Merrimack Valley
Food Resource Directory during COVID-19.
Click [here](#) to go to the site.



Online: DTAConnect.com
www.mass.gov/SNAP



COVID-19 Public [Resources](#)

Healthcare



Toll-free: 855-781-9898
VP: 339-224-6831
Email: info@myombudsman.org



MassHealth PCA Help Hotline
Voice: 1-844-422-6277

MCDHH Services



Deaf Recovery Coaches (M-F)
VP: 413-347-4094
Text: 857488.5440
Email: Karran.Larson@mass.gov

MCDHH Case Management (M-F)
VP: 617-326-7546
Voice: 617-740-1600

Victim Services Program (M-F)
Shannon Silvestri
Voice/Text: 857-202-7164
Email: mailto:Shannon.silvestri@mass.gov

Mental Health & Crisis Services

CRISIS TEXT LINE |

crisistextline.org



kivacenters.org



save.org

National Suicide Prevention Hotline



24/7, confidential
ASL Users Dial 988!
(V) 800-273-TALK (8255)

Substance Use Meetings



For NEW meetings or online recovery events, click [here](#) to make a request through MCDHH's online system.



Want to be added to the email list?
Contact Scott LaSaffre at: scott.lesaffre@mass.gov

Here are some area websites:

- AA Boston: aaboston.org
- AA Western MA: westernmassaa.org
- Massachusetts Al-Anon: ma-al-anon-alateen.org
- New England Region of NA: nema.org



Victims Services



Deaf Domestic Violence Victims
ASL Hotline
1-855-812-1001 (Available 24/7)
thehotline.org



Our Deaf Survivors Center, Inc.
VP: 978-451-7225
Text: 978-473-2678
Email: CBodsc414@gmail.com



Pathways for Change
Deaf Survivors Program
VP: 508-502-7681
Text: 774-279-2011
Email: sglover@pathwaysforchange.help

Other



TO APPLY for the 1st time:

- Email: LIHEAP@wcac.net
- Text: HEAT (English) to 80123
- Text: CALOR (Spanish) to 80123



COVID-19 Resources in ASL
[Convo Relay](#)

ZOOM GUIDE

CLW DHILS made a guide for using *Zoom*. Step-by-step instructions and pictures show how to:

- Download the *Zoom* app
- Join/Leave a meeting
- Gallery View vs. Speaker View
- Pin a screen
- ...and more!

WANT A COPY?

Contact **Denise Paro**:

dparo@centerlw.org or
508-556-1600 (VP)



My Ombudsman is here to help you regarding your MassHealth health plan!

Do you have problems with?

- Your doctor
- Medications
- Medical equipment (Wheelchair, oxygen machine, machine for diabetes, etc.)
- Medical transportation
- Doctor bills
- Dentist issues
- No interpreters? No CART?
- PCA issues
- Something else?
- Ask us!

Contact Lori Siedman, Director of Deaf Services

VP: 339-224-6831

Email: LSiedman@MyOmbudsman.org

Online: www.myombudsman.org



DHILS SPECIAL EDITION NEWSLETTERS – PAST ISSUES

Missed a *What's Up* or *Parents Special Edition* Newsletter?

Find all issues [here](#) on CLW's website.

Like/Follow CLW on:



ANY QUESTIONS ABOUT THIS NEWSLETTER?

Need a website address from your printed newsletter? Contact your Skills Trainer!

Joan Philip	DHILS Director	508-762-1165 (VP)
VACANT	Deaf Skills Trainer	508-762-1350 (VP)
Denise Paro	Administrative Assistant	508-556-1600 (VP)
Ellen Perkins	Hard of Hearing Skills Trainer	508-502-7576 (Voice); 508-762-1354 (VP)
Joy Spurlin	Assistant Manager/Skills Trainer	508-762-1166 (VP)
Justina Bailey	Deaf Skills Trainer	508-762-1021 (VP)
Kim White	Staff Interpreter	508-755-1042 x5042; 508-283-1036 (VP)

