



Special Edition - *What's Up Newsletter*

www.CenterLW.org

COVID-19 UPDATES

HOUSING EVICTION UPDATE

Massachusetts' Eviction Moratorium (hold on evictions and foreclosures) **ended October 17th**. Landlords/courts can start evictions again.

Need housing help related to COVID-19?

- Call Massachusetts 2-1-1 information hotline
- Look Online: mass.gov/CovidHousingHelp
- Find your town's agency here: hedfuel.azurewebsites.net/raa.aspx



CDC MORATORIUM

But the Centers for Disease Control (CDC) started a **national** eviction moratorium to protect some tenants who can't pay their rent. **If you qualify, your landlord can't evict you until after December 31, 2020.**

Click [here](#) to see:

- Do I qualify for the CDC eviction moratorium?
- If I qualify, what do I need to do? - Apply for RAFT
- **Get a *Declaration Form* [here](#)** - sign, download, email or print and mail it to your landlord AND keep a copy.
 - NOTE: courts will continue to accept filings, process cases, and enter judgments.

REOPENING MASSACHUSETTS - **NO CHANGE**

CURRENT STATE: Phase III, Step 2
FOR LOWER-RISK COMMUNITIES

Phase Three: *Vigilant*

STOP THE SPREAD - *EXTENDED TO THE END OF DECEMBER*



**FREE COVID-19
testing.**

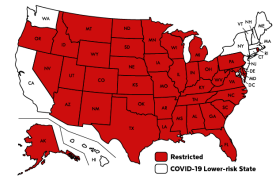
Continued testing in: Brockton, Chelsea, Everett, Fall River, Framingham, Holyoke, Lawrence, Lynn, Marlborough, Methuen, New Bedford, Randolph, Revere, Salem, Saugus, Springfield, Winthrop, or Worcester

Sick *or* not sick - everyone is encouraged to get tested.

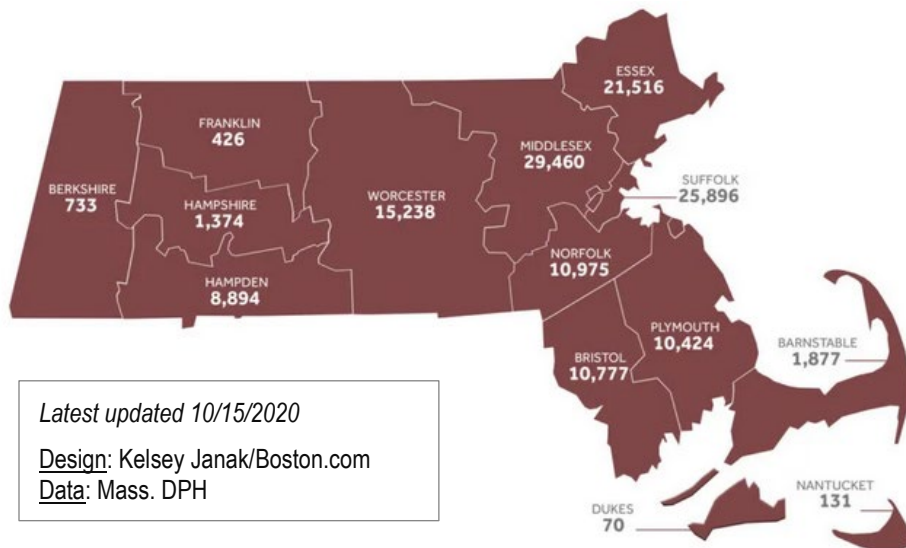
Click [here](#) for where to go for testing and more information.

Updated “Lower Risk States” Map

Click [here](#) to view the map larger.



WHERE ARE CORONAVIRUS CASES IN MASS?



138,083 confirmed and probable cases

9,249 related deaths

Map to the left shows where cases are, by county.

Note: locations of 291 cases are currently unknown.

For more information see: www.boston.com/tag/coronavirus

See what's happening in other states - [here](#).



Click [here](#) to take the survey.

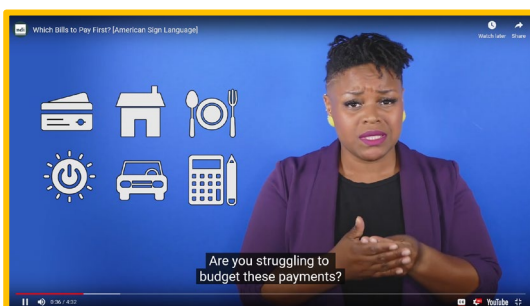
COVID-19 COMMUNITY IMPACT SURVEY

Are you a Massachusetts resident age 14 and up?

Please take a survey to help plan resources and support as we continue to deal with COVID-19.

- Available in multiple languages.
- Takes only 10 to 15 minutes to do.

WHICH BILLS TO PAY FIRST? [AMERICAN SIGN LANGUAGE]



ndi | FINANCIAL
RESILIENCE
CENTER

Watch this and other VLOGS here:

<https://www.nationaldisabilityinstitute.org/financial-resilience-center/deaf-resources/>

WARNING: ROMANCE AND DANGEROUS SCAMS

Be careful of anyone you meet online! More and more scams are happening online, by phone, email, Zoom, etc., because it's hard to prove who messages are from. Scammers make phone calls/webcam conversations/emails, etc. look real, but they're fake.

ROMANCE SCAMS

Scammers use "relationships" to get money and other things from a victim. Victims become emotionally attached and can't see they're being used. Scammers gain your trust, then ask for money, gifts or private information (SS #, bank account #, etc.).



DISTRESS SCAMS

"Distress" = trouble/danger/sadness

A *Facebook* friend messages/calls/emails you saying they need money: to get out of jail; to fly home after being kidnapped; to help a family member (child, grandchild, etc.) and many more situations.

RED FLAGS:

- A romantic interest you met on *Facebook* (or anywhere online) asks for money/gift cards to: pay their rent, get their cat/dog/pet an operation, etc.
- They quickly show you a lot of love and affection.
- He/she tries to move the conversation to a private channel (AIM, Messenger, emails or text).
- **Asks you** many personal questions but **doesn't share** much about themselves.
- Will not meet face-to-face, make video calls - no **real life** conversations happen.

HOW TO PREVENT SCAMMERS



- Scammers make fake accounts.
- **NEVER** accept an invitation from someone you don't know/recognize *especially if it just says "Facebook User" and there's no photo.*

- If you get a message from a friend asking for money (even someone you know in real life or is a *Facebook* friend) - **make sure it's really them - chances are it's a scammer!**

- **Contact them another way:** VP, email or text message



If it's a scam:

- **Block the person** who sent you the message and **report them to Facebook** right away!
 - Click [here](#) to learn how to report it.

REMEMBER

- **NEVER** give money: if you're asked to pay something - it's a scam.
- **NEVER** share personal information (birthdate, SS #, address, etc.)

VLOG in ASL will
be posted in
next Newsletter!

HAS THIS HAPPENED TO YOU?

Contact the *MA Attorney General's Office Consumer Hotline* at 617-727-8400.

VOTING RESOURCES



National Council of Independent Living

<https://ncil.org/votingrights/>


REV UP Massachusetts

<http://revupma.org/wp/>


Voting in Massachusetts

www.mass.gov/topics/voting


Voting in Worcester

www.worcesterma.gov/elections/voter-assistance/voter-registration


ASL Voter Hotline

301-818-VOTE (301-818-8683) or visit NAD's *Facebook* page [here](#).

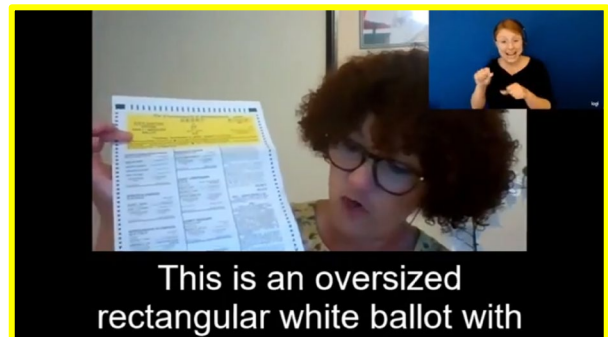
SignVote Series: Election 2020

<https://signvote.org/#subscribe>
IMPORTANT ELECTION DATES**Election Day: November 3****APPLY FOR MAIL-IN BALLOT DEADLINE: October 28****VOTE EARLY: October 17 – 30****VOTE ON ELECTION DAY: Polling Hours 7AM– 8PM****Accessible Vote by Mail Program**

How do I apply to use this as an accommodation?

Watch the [video](#).

Voters already approved to participate in the AVBM program for both the primary and general elections don't need to apply again.



This is an oversized rectangular white ballot with

VOTING BY MAIL - IMPORTANT!

STEP 1: VOTE

- Mark your ballot:
 - Use a black pen to mark your ballot.
 - Look for questions on page 2.
 - Need help marking/reading the ballot? Ask someone to help you.
 - That person must fill-out and sign the "Assisting Person" section on the yellow "Early Ballot Envelope".

Official Ballot

Early Ballot Envelope

- PUT YOUR BALLOT IN THE YELLOW "EARLY BALLOT ENVELOPE", SEAL AND SIGN IT.
 - Print your name and address under your signature.
 - Can't sign your own name? Ask someone to sign your name for you.
 - That person must fill-out and sign the "Assisting Person" section.

STEP 2: RETURN YOUR BALLOT

- Put your signed yellow "Early Ballot Envelope" in the white return envelope (see picture below) and seal it.
- Mail your ballot - no stamp needed.
- OR drop off your ballot at:
 - Your local election office.
 - Any early voting location.
 - Or a drop box in your city/town.

Find a ballot return location at: www.sec.state.ma.us/ele/

STEP 3: YOU'VE VOTED!

- When your ballot arrives at your city/town hall, your vote is final - you can't take your ballot back or vote again.
- If your ballot doesn't get to your city/town hall by November 3rd - you can vote at your polling place.

TRACK YOUR BALLOT:

www.TrackMyBallotMA.com

Ballots can only be counted if they're received by November 6 and postmarked by November 3.

Ballots received by 8:00PM on November 3, don't need to be postmarked.

If mailing your ballot, mail it by October 27th to make sure it arrives on time!

White Return Envelope



LAST PRESIDENTIAL DEBATE THURSDAY, OCTOBER 22, 2020 9 PM - 10:30 PM

Trump and Biden will be moderated by Kristen Welker, NBC News

OTHER THINGS TO KNOW!

MENTAL HEALTH RESOURCES

WATCH:

Accessing Mental Health in the Deaf Community:
A Panel Discussion



Other Resources:

- "[Trauma is Written Into Our Bodies](#) - but Educators Can Help" (Dr. Nadine Burke Harris)
- *National Association for the Deaf's* release on [Mental Health Day](#)
- *Lauren Clerc National Deaf Education Center* [Mental Health Services](#)
- [7 Actions to take](#) during Mental Health Awareness Week (Mental Health America)
- [World Federation for Mental Health](#)

MCDHH REFERRAL SERVICES

Learn more about:

- Remote interpreting services
- Remote CART services

Keep up to date with the latest from MCDHH on
Facebook.

www.facebook.com/MCDHH.MA/



WORK BEGINS ON EXIT NUMBERS

Project will last at least through the summer of 2021!

Learn more here: www.newmassexits.com/

Please take a few minutes to fill out this survey and help spread awareness about hearing health and ways to support our community. Click [here](#) to take the survey.

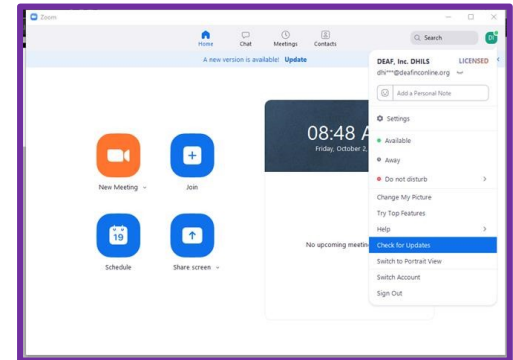
The survey will close at midnight on Saturday, October 31, 2020.



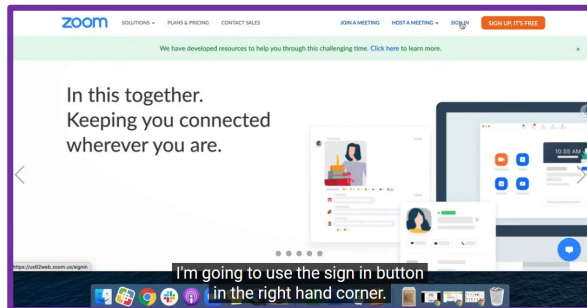
ZOOM TIPS

Rearrange the order of videos in Zoom.

- Make sure you are in **Gallery** view.
- Click on **Unhide** any 'non-video' participants.
- **Click and drag** the videos to where you want them.
- **Re-hide** 'non-video' participants.
- Didn't work? Update your *Zoom*.



Turn on "Live Stream" captions in Zoom.



NOTE:

- Automated captioning is not as accurate as using CART.
- Currently - captions **DON'T** work in breakout rooms (even though the CC button is there).
- Captions are not visible (for the screen sharer) when you screen share.

DEAF YES!



A culturally based, Deaf-positive center for behavioral healthcare, research, and training.

Located at **UMass Medical School** in Worcester, MA.

Click [here](#) to visit the Facebook page.

ODSC UPDATE

Our Deaf Survivors Center, Inc., (ODSC) will receive \$450,000 from the federal government program **OVW - Office on Violence Against Women**. ODSC will be able to hire staff to provide services to Deaf victims/survivors of sexual and domestic violence for the *next 3 years!*

More details will be announced later.



www.odscunity.org/

ODSC is excited and thanks the community for their ongoing support!

WEBINARS & UPCOMING EVENTS

NILP's Virtual Annual Meeting

**WEDNESDAY, OCTOBER 28, 2020****5:30 - 7:00 PM**

Live video meeting online! Join us for our Annual Meeting with a slideshow.

CART and ASL interpreters have been requested.

To get the Zoom link, register [here](#).


PLEASE WEAR MASK WITH YOU FOLLOW POLICY
PLEASE AND THANK YOU FOR UNDERSTAND

WHEN: Saturday, November 7, 2020
TIME: 12:30 - 3:00 PM
WHERE: RED ROBIN
70 Worcester Providence Turnpike
Millbury, MA 01527
(The Shoppes at Blackstone Valley)

RESTAURANT COST: \$\$

New Policy: Attendees are expected to purchase food and/or beverage.

ASL HANGOUT

SATURDAY, NOVEMBER 7, 2020**12:30 PM - 3:00 PM**

Red Robin (Shoppes at Blackstone Valley)

70 Worcester Providence Turnpike

Millbury, MA

NOTE: Attendees must buy food/beverage.

Questions?

Robert Kwiatkowski: fetarobert@gmail.comKenny Trychon: bettaorange@charter.net

DHILS CONSUMER DEAF CHAT - JOIN US!

TUESDAY, NOVEMBER 10, 2020**1:00 PM - 2:00 PM***Theme: Favorite Holiday Memories
(Halloween, Thanksgiving, etc.)***RSVP** to Denise Paro at:
dparo@centerlw.org or 508-556-1600 (VP)Click [here](#) to watch a video about setting up
and using Zoom.Have an idea for a webinar or chat? *Contact your skills trainer!*

RESOURCES

Food



Not enough food/money to buy food?
Type in your zip code [here](#) for a list of food banks/pantries near you.



Elder Services of Merrimack Valley
Food Resource Directory during COVID-19.
Click [here](#) to go to the site.



Online: DTAConnect.com
www.mass.gov/SNAP



COVID-19 Public [Resources](#)

Healthcare



Toll-free: 855-781-9898
VP: 339-224-6831
Email: info@myombudsman.org



MassHealth PCA Help Hotline
Voice: 1-844-422-6277

MCDHH Services



Deaf Recovery Coaches (M-F)
VP: 413-347-4094
Text: 857-488-5440
Email: Karran.Larson@mass.gov

MCDHH Case Management (M-F)
VP: 617-326-7546
Voice: 617-740-1600

Victim Services Program (M-F)
Shannon Silvestri
Voice/Text: 857-202-7164
Email: mailto:Shannon.silvestri@mass.gov

Mental Health & Crisis Services

CRISIS TEXT LINE |

crisistextline.org



kivacenters.org



save.org

National Suicide Prevention Hotline



24/7, confidential
ASL Users Dial 988!
(V) 800-273-TALK (8255)

Substance Use Meetings



For NEW meetings or online recovery events, click [here](#) to make a request through MCDHH's online system.



Want to be added to the email list?
Contact Scott LaSaffre at: scott.lesaffre@mass.gov

Here are some area websites:

- AA Boston: aaborston.org
- AA Western MA: westernmassaa.org
- Massachusetts Al-Anon: ma-al-anon-alateen.org
- New England Region of NA: nerna.org



Victims Services



Deaf Domestic Violence Victims
ASL Hotline
1-855-812-1001 (Available 24/7)
thehotline.org



Our Deaf Survivors Center, Inc.
VP: 978-451-7225
Text: 978-473-2678
Email: CBodsc414@gmail.com



Pathways for Change
Deaf Survivors Program
VP: 508-502-7681
Text: 774-279-2011
Email: sglover@pathwaysforchange.help

Other



TO APPLY for the 1st time:

- Email: LIHEAP@wcac.net
- Text: HEAT (English) to 80123
- Text: CALOR (Spanish) to 80123



COVID-19 Resources in ASL
[Convo Relay](#)

MRC FOCUS GROUP & INTERVIEW PROJECT

WHO?	<ul style="list-style-type: none"> MRC consumers and their families
WHAT IS THE FOCUS GROUP FOR?	<p>Help MRC:</p> <ul style="list-style-type: none"> Enhance services for people with disabilities Increase collaboration with service providers, families and employers Empower stakeholders to drive positive change.
HOW DO I SIGN UP?	<ul style="list-style-type: none"> <i>Participants will receive a \$50 gift card (Amazon, Target, Walmart).</i> To sign up, visit www.surveymzmo.com/s3/5652018/MRC-Focus-Group
WHEN IS IT?	<ul style="list-style-type: none"> Between October 2020 and December 2020 <i>Meetings will be on Zoom.</i>

Questions? Email: mrc-umms-rana@umassmed.edu

Call: 508-856-3268.

DHILS SPECIAL EDITION NEWSLETTERS – PAST ISSUES

Missed a *What's Up* or *Parents Special Edition* Newsletter?

Find all issues [here](#) on CLW's website.

Like/Follow CLW on:



ANY QUESTIONS ABOUT THIS NEWSLETTER?

Need a website address from your printed newsletter? Contact your Skills Trainer!

Joan Philip	DHILS Director	508-762-1165 (VP)
VACANT	Deaf Skills Trainer	508-762-1350 (VP)
Denise Paro	Administrative Assistant	508-556-1600 (VP)
Ellen Perkins	Hard of Hearing Skills Trainer	508-502-7576 (Voice); 508-762-1354 (VP)
Joy Spurlin	Assistant Manager/Skills Trainer	508-762-1166 (VP)
Justina Bailey	Deaf Skills Trainer	508-762-1021 (VP)
Kim White	Staff Interpreter	508-755-1042 x5042; 508-283-1036 (VP)

