



Special Edition

Parents Newsletter

Resources for parents and child caregivers

COVID-19 INFORMATION AND RESOURCES



Why is it important to wear masks?

American Society for Deaf Children has an ASL video for children about why it is important to wear face masks.

Click [here](https://deafchildren.org/2020/10/face-masks-deaf-kids-video/) to watch or copy the link below.

<https://deafchildren.org/2020/10/face-masks-deaf-kids-video/>

How do face masks muffle speech?

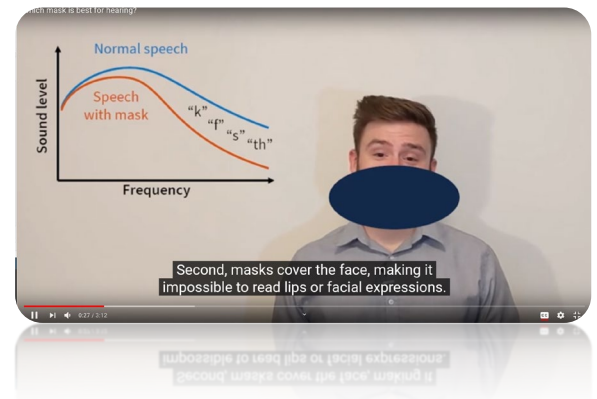
How do face masks affect people wearing hearing aids or cochlear implants?

Watch the *YouTube* video:

<https://www.youtube.com/watch?v=4bUp2TosgzE>

Read the article:

<https://csl.illinois.edu/news/csl-postdoc-researches-speech-acoustics-face-masks>



NASAL FLU SPRAY WARNING

The CDC says children with cochlear implants should **NOT** receive the **nasal flu spray**.

There are other flu vaccine options - talk with your doctor or healthcare provider.

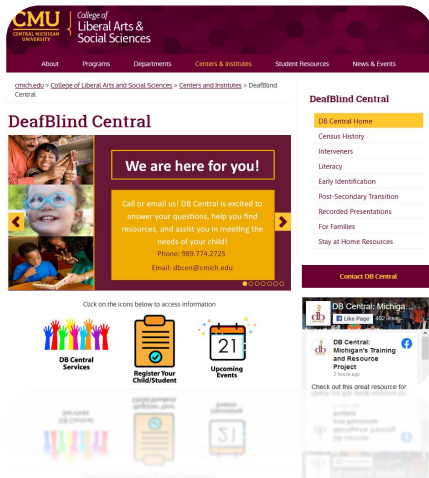
Want more information?

Click here:

<https://www.cdc.gov/flu/prevent/nasalspray.htm>



DEAFBLIND CENTRAL



A new website (from *Central Michigan University*) has resources for teachers and parents of Deaf and DeafBlind students.

Check out their library of children's stories in ASL. Each story has an:

- ASL video
- Vocabulary video
- Lesson plan

Click [here](#) to visit the site.



PARENT ADVOCACY APP



Learn more about an app for families of children who are deaf or hard of hearing attending IEP meetings, 504 meetings, or other meetings.

The Parent Advocacy app helps you to understand:

- what IEP and Section 504 meetings are about;
- how you can be the best advocate for your child; and
- how you can prepare yourself for working with the school in the best interest of your child.

About the Presenter:

Mary Henry Lightfoot, MS, CI/CT, NIC: Adv. is the Online Learning Manager at the Laurent Clerc National Deaf Education Center at Gallaudet University. She manages national level projects focused on the needs of deaf and hard of hearing students, manages collaborations with institutional partners, and provides instructional design for online project using e-learning and m-learning technologies, as well as live face-to-face projects. Mary's work is primarily focused on resources geared toward professionals and families with deaf and hard of hearing children in school, K -12th grade.



The Parent Advocacy app is a collaboration between
 The Laurent Clerc National Deaf Education Center ~ American Society for Deaf Children ~ Hands & Voices ~ National Association of the Deaf

To register for this event:



[please scan this QR code]

f LIVE Facebook LIVE Event

Wed., Nov. 18 @ 11a - 12p

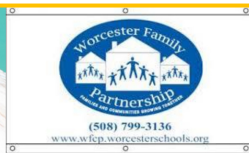
facebook.com/RI.HandsAndVoices/live

This event will be ASL-interpreted. 

For more information, to submit questions in advance, or request accommodations to attend, please e-mail: RI.HandsAndVoices@gmail.com

<https://www.facebook.com/RI.HandsAndVoices/>

RI.HandsAndVoices@gmail.com



WFP VIRTUAL Playgroup

Join us LIVE - daily, from the comfort of your own HOME!
Fun filled activities for families to learn together!

MONDAY

10am
3pm

TUESDAY

10am
3pm

WEDNESDAY

10am
3pm
6pm

THURSDAY

10am
3pm

FRIDAY

10am
3pm

CIRCLE TIME

E

STORY TIME



SONGS

ACTIVITIES

SINGING

Zoom Link-818-8118-4676

Please email below for password

vietze@worcesterschools.net

thompsons@worcesterschools.net

For more information call
 (508)799-3136 or text PLAYGROUPS to
 22828 to receive our newsletters



CONTACT: Vietze@worcesterschools.net, thompsons@worcesterschools.net

FUN IDEAS



Learn more about the museum [here](#).

The Discovery Museum is offering a 1-year Discovery Membership **free** for *Epecially for Me!* families.

Epecially for Me! is a program through *The Discovery Museum* for families of children with hearing loss, autism, sensory needs, and blindness/visual impairment.

The membership admits **up to 6 visitors** to the *Museum* during their regular public hours.

Interested?

1. Email membership@discoveryacton.org.
2. You'll get an e-mail with registration instructions.
3. When your membership is processed, a digital e-Membership card will be sent to your mobile phone.

CALLING ALL ELEMENTARY
DEAF AND HARD OF HEARING STUDENTS

Want to win FREE Gallaudet gear?

TRIVIA CUP: ANIMALS

50 questions Kahoot! trivia event conducted via Zoom
November 17, 2020
7pm EST
REGISTER BEFORE NOVEMBER 12TH
[APPLY.GALLAUDET.EDU/REGISTER/TRIVIACUPELEM](https://apply.gallaudet.edu/register/triviacupelem)

GALLAUDET UNIVERSITY
Youth Programs
(202) 250-2189 (videophone)
www.gallaudet.edu/youth-programs
youth.programs@gallaudet.edu

CONNECT WITH US
f i
@GUyouthprograms



Learn more about *Youth Programs*:
<https://www.gallaudet.edu/youth-programs/>

Register for *Trivia Cup* here:
<https://apply.gallaudet.edu/register/triviacupelem>

PRIMAVERA SKILLET PIZZA

INGREDIENTS

- 2 bell peppers, sliced
- 1/2 head broccoli, chopped
- 1/4 small red onion, thinly sliced
- 1 c. cherry tomatoes
- Extra-virgin olive oil
- Salt
- Freshly ground black pepper
- All-purpose flour, for dusting surface
- 1 lb. pizza dough, at room temperature
- 1 c. Ricotta cheese
- 1 c. Shredded mozzarella



DIRECTIONS

- 1) Heat oven to 400°.
- 2) Mix peppers, broccoli, onion, and cherry tomatoes with olive oil and salt and pepper – put on large baking sheet.
- 3) Roast veggies until tender (about 18-20 minutes).
- 4) Remove veggies and increase oven temperature to 500°.
- 5) Brush an **oven-proof** skillet with olive oil.
- 6) Sprinkle flour on your work area. Roll out dough with your hands to the size of your skillet.
- 7) Put dough in the skillet; brush it with olive oil.
- 8) Leave a 1/2" border for crust. Spoon ricotta on dough and sprinkle with mozzarella.
- 9) Put roasted vegetables on dough and drizzle with olive oil.
- 10) Sprinkle crust with salt.
- 11) Bake until crust is crispy and cheese is melted (about 12 minutes).

Makes 2 servings.

Prep Time: 15 minutes

Total Time: 45 minutes

Find the recipe here: <https://www.delish.com/cooking/recipe-ideas/recipes/a46837/primavera-skillet-pizza-recipe/>

DHILS SPECIAL EDITION NEWSLETTERS – PAST ISSUES

Missed a *What's Up* or *Parents Special Edition* Newsletter?

Find all issues [here](#) on CLW's website.

Like/Follow CLW on:



Want our newsletters
emailed to you?

Contact Kim White at:
kwhite@centerlw.org

QUESTIONS ABOUT THIS NEWSLETTER?

CONTACT YOUR SKILLS TRAINER WITH ANY QUESTIONS!

Need a website address from your printed newsletter? Contact your staff!

Joan Philip	<i>DHILS Director</i>	508-762-1165 (VP)
VACANT	<i>Deaf Skills Trainer</i>	508-762-1350 (VP)
Denise Paro	<i>Administrative Assistant</i>	508-556-1600 (VP)
Ellen Perkins	<i>Hard of Hearing Skills Trainer</i>	508-502-7576 (Voice); 508-762-1354 (VP)
Joy Spurlin	<i>Assistant Manager/Skills Trainer</i>	508-762-1166 (VP)
Justina Bailey	<i>Deaf Skills Trainer</i>	508-762-1021 (VP)
Kim White	<i>Staff Interpreter</i>	508-755-1042 x5042; 508-283-1036 (VP)