

WHAT'S UP? *DEAF & Hard of Hearing* Parents

Make the Difference

Welcome!

Welcome to a new edition of the Center for Living & Working's, Deaf and Hard of Hearing Independent Living Services (DHILS) "*Deaf and Hard of Hearing Parents*" newsletter. We hope this will be a useful guide to resources and services available to Deaf and Hard of Hearing parents.

If you are already signed up to receive the "What's Up" newsletter, you will continue to receive that as well. This will be a supplement for parents and families.

We welcome your feedback, suggestions and comments. Please let us know what YOU need!

Sincerely,

Joan Philip

Director of DHILS





Boston Children's Hospital
Deaf and Hard of Hearing
Program



SHARING BOOKS WITH YOUR DEAF OR HARD OF HEARING CHILD

an interactive workshop for parents and caregivers on
how to read with Deaf and Hard of Hearing children

Saturday, September 24th, 2016

8:30am-1:30pm

Location:

Northeastern University

Shillman Hall, Rooms 210 & 220

360 Huntington Ave, Boston, MA 02115

For Who:

This event is free and open to parents and caregivers. Refreshments, a light lunch, and childcare will be provided (appropriate up to age 10).

RSVP required, by Sept 18th

Contact Info:

Phone: (978) 556-3701

VP: (978)241-7417

Email: gurc.necc@gallaudet.edu

Presenter:

Francisca Rangel



Francisca Rangel is an ASL instructor in the Early Childhood Department at the Laurent Clerc National Deaf Education Center at Gallaudet University in Washington, D.C. She has over 20 years' experience as an educator at the Kendall Demonstration Elementary School at Gallaudet. Francisca has experience as a coordinator of the ASL and Deaf Studies Department, as a bilingual educator, elementary team leader, mentor, facilitator and presenter. She also served in the Peace Corps in Ecuador and is one of the founders of the Deaf Women of Color organization.

Public transportation, driving, and parking directions on the back



Want to get this newsletter in Your Email?

Let us know if you want to \$AVE on mailing costs and save trees!
Register your email with CLW!

KWhite@CenterLW.org

*If you want to receive the **What's Up** newsletter in the mail let us know!*

Contact Us!

Center for Living & Working, Inc.

Deaf and Hard of Hearing Independent Living Services Department

Videophone: 508-762-1164

Voice/TTY: 508-755-1003

www.CenterLW.org



Like us on Facebook!

<https://www.facebook.com/CenterForLivingAndWorking>



CLW DHILS Staff

Joan Philip, *DHILS Program Director*
 (JPhilip@centerlw.org)

Joy Spurlin, *Assistant DHILS Director and Deaf Skills Trainer*
 (CSpurlin@centerlw.org)

Heidi Clemmey, *Deaf Skills Trainer*
 (HClemmey@centerlw.org)

Ellen Perkins, *Hard of Hearing Skills Trainer*
 (EPerkins@centerlw.org)

Kim White, *Communication Facilitator*
 (KWhite@centerlw.org)

Katie Peirola, *Communication Facilitator*
 (KPeirola@centerlw.org)

Inside this issue:

Welcome	1
Sharing Books with Your Deaf or Hard of Hearing Child	2
Newsletter Email Sign up	3
Contact Us	3
DHILS Staff	3
Discovery Museums "Especially for Me" Programs	4
Family Resources	5-7
Kids Corner	8



Especially
for Me

**Free Morning for Families with
Deaf, Hard of Hearing and CODA
Toddlers and Preschool-Aged Children**

**Monday, September 26, 2016
9:30am - 12:30pm**

**REGISTER NOW
USING THE LINK BELOW!**



Deaf and hard of hearing children will enjoy the Discovery Woods and activities during this special free morning for families!

Help spread the word by forwarding this invitation to your family and friends.

Admission is free but pre-registration is required:

<http://bit.ly/DHHSep2016>

Where:

The Discovery Museums
177 Main Street (Route 27)
Acton, MA 01720



[Driving Directions](#)

[For more information, contact The Discovery Museums](#)

Sponsored by:



Boston Children's Hospital
Deaf and Hard of Hearing
Program



Family Resources



Deaf and Hard of Hearing Program

[Home](#) > [Centers](#) > [Services](#) > [Programs and Services](#) > [Deaf and Hard of Hearing Program Overview](#)

The Deaf and Hard of Hearing Program at Boston Children's Hospital provides comprehensive evaluation and consultative services to deaf and hard of hearing children. We'll also interact closely with your child's physician, schools, and any other applicable agencies.

Visit this link for more information: <http://www.childrenshospital.org/dhhp>

Supporting the Optimal Development of Infants with Hearing Loss: What Can We Learn by Observing Deaf Parents?

Presented by: Lynn Sanford Koester, Ph. D.

When: October 6, 2016 at 6:00 pm – 7:00 pm

Where: Bordy Theater, 216 Tremont Street, Boston

Cost: FREE (light refreshments served)

ASL Interpreters
provided

Please RSVP to: CSDevents@emerson.edu

Parent Support

Family TIES (<http://www.massfamilyties.org/>) is a statewide information and parent-to-parent support project for families of children with a disability, chronic illness or other special health care needs. It is administered by parent coordinators in six regional offices of the Massachusetts' Department of Public Health. Family TIES regional parent coordinators can assist families in finding resources and services within their region; make parent-to-parent matches with other families who are experiencing similar situations; and provide general support to families of children with special health care needs. [Call 800-905-TIES to connect with a regional parent coordinator or go to our Human Services Office Locator at <https://www.disabilityinfo.org/mnip/db/tacr/> and search by *Office* or by *Town*.]



DDS Statewide Family Support Directory (<http://www.mass.gov/eohhs/docs/dmr/reports/family-support/family-support-directory.pdf>). *Family Support Centers* across the state provide a local presence and act as a hub for offering a wide range of general family support services and activities to families of children and adults who are eligible for DDS services.



Massachusetts Sibling Support Network Programs (<http://www.masiblingsupport.org/programs.html>) provides information on service providers, workshops, adult & young sibling social groups.

Family Resources (continued...)

Advocacy

Massachusetts Advocates for Children (MAC) (<http://massadvocates.org/>) is a premier child advocacy leader in Massachusetts. Provides help for children who are facing barriers to receiving educational supports and services to which they are legally entitled.

25 Kingston St, 2nd Floor

Boston, MA 02111

Disability Hotline: 617 357-8431 x 224

Email: llockhart@massadvocates.org, help@massadvocates.org



Autism Insurance

Autism Insurance Resource Center (<https://www.disabilityinfo.org/arica/>) contains information on issues related to medical insurance for autism treatment.

Phone: 774-455-4056

Email: info@disabilityinfo.org



Child Care



Find Early Education & Care Programs at *The Official Website of the Executive Office of Education*: <http://www.mass.gov/edu/birth-grade-12/early-education-and-care/find-early-education-and-care-programs/>

Education

Early Intervention (<http://www.mass.gov/eohhs/gov/departments/dph/programs/family-health/early-intervention/>) is a statewide, integrated, developmental service available to families of children between birth and three years of age. Children may be eligible for EI if they have developmental difficulties due to identified disabilities, or if typical development is at risk due to certain birth or environmental circumstances. The Massachusetts Department of Public Health administers and oversees the statewide system of Early Intervention Services.

Phone: 617-624-5975

Toll free: 800-905-8437

Education (continued...)

Federation for Children with Special Needs (FCSN) (<http://fcsn.org/>) operates as a Parent Center offering a variety of services to parents and parent groups. Provides up to date information on special education legislation.



The Shrafft Center

529 Main St, Suite 1102

Boston, MA 02129

Toll free: 800 331-0688 (in Massachusetts only)

Phone: 617 236-7210

Email: info@fcsn.org

Massachusetts Act Early Program (<http://www.maactearly.org/>) local affiliate of the CDC's "Learn the Signs. Act Early." campaign: Web site offers families and professionals free downloadable information, materials and training about healthy developmental milestones in young children, early warning signs of developmental concerns, the importance of routine developmental and autism screening, and timely early intervention whenever there is a concern.



Phone: 774-455-6531

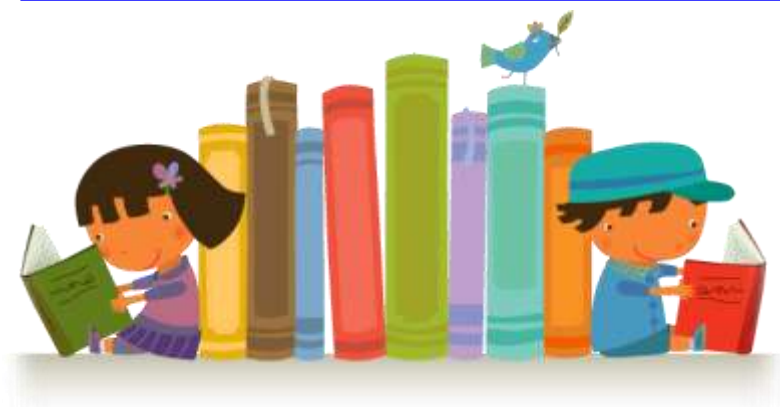
UMass Medical School/E.K. Shriver Center

55 Lake Avenue North, S3-301

Worcester MA 01655

For more information contact:

Elaine M. Gabovitch, MPA at Elaine.Gabovitch@umassmed.edu



WORCESTER



PUBLIC LIBRARY

Check out the latest Kid Zone at the Worcester Public Library!

<http://mywpl.org/?q=kids-zone>

Kids Corner

Color the:

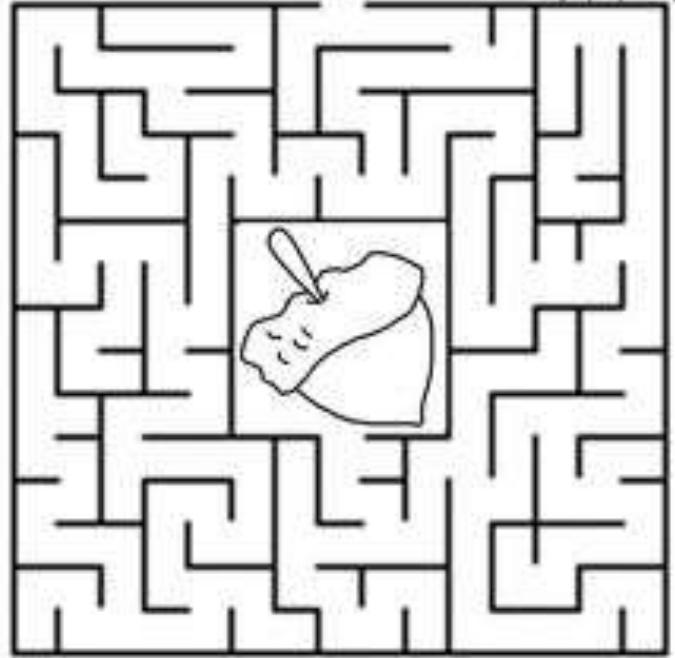
Pumpkin



twistynoodle.com

Autumn Maze

Help the squirrel find his acorn.



Center for Living & Working, Inc.

484 Main Street, Suite 345
Worcester, MA 01608

www.centerlw.org



*Empowering
Independence*